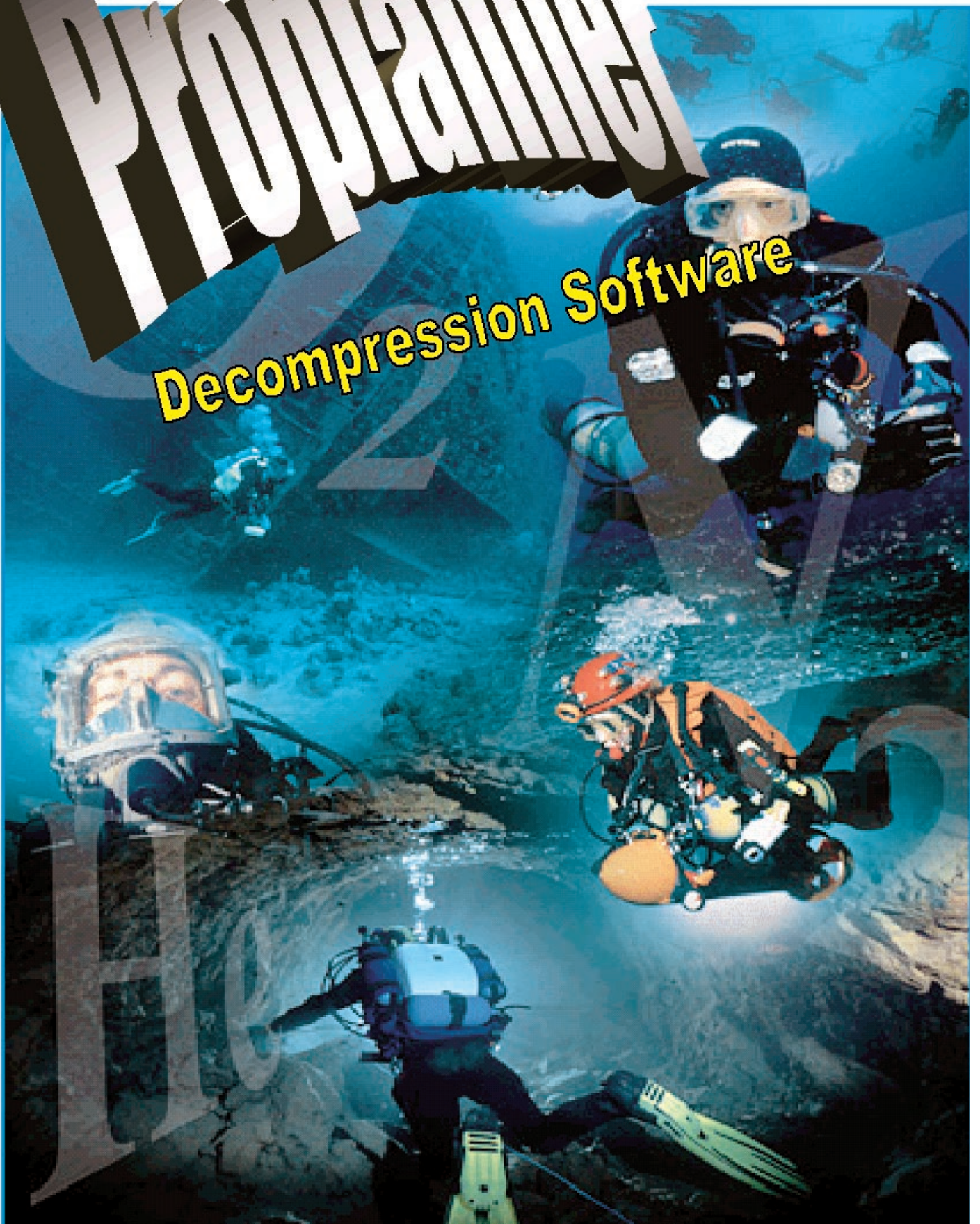


# PROPRIETARY

## Decompression Software



Artwork © 1999 Gavin Newman

## USER'S MANUAL

Copyright © 1999 Delta P Technology Ltd

# TABLE OF CONTENTS

WAIVER .....	2	PROLOG .....	10
SPECIFICATION .....	2	VR3 MIXED GAS COMPUTER .....	10
OXYGEN TOXICITY SYSTEM .....	3	INTRODUCTION .....	10
INSTRUCTIONS .....	3	1. DOWNLOAD DIVE .....	10
INSTALLATION .....	3	6. METERS .....	10
FRONT SCREEN .....	3	7. SAVE .....	10
GENERAL NOTES ON ALL DIVE SCREENS .....	3	8. RESTORE/REVIEW .....	10
		G. GAS TABLE .....	10
		D. PROPLANNER .....	10
		P. PRINTERS .....	10
		C. COMM PORT .....	10
1. AIR .....	4		
2. NITROX .....	4		
3. TRIMIX .....	5		
4. NITROX REBREATHING .....	5		
5. TRIMIX REBREATHING .....	6		
7. SAVE .....	6		
8. RESTORE/REVIEW .....	7		
1. Mission creating .....	7		
9. SAFETY FACTOR .....	8		
A. ATMOSPHERIC .....	8		
B. BREATHING RATE .....	8		
C. CYLINDER FILLING .....	8		
S. LAST STOP .....	8		
T. TIME OF DAY .....	8		
P. PRINTER TYPE/FORMAT .....	9		
O. GAS TABLES/OPTIMISE .....	9		
M. MANUAL .....	9		
U. BUBBLES .....	9		
0. EXIT .....	9		

## WAIVER

Pro Planner is designed as a tool for planning decompression schedules for use with Oxygen, Nitrogen and Helium. By using this software the user accepts full responsibility for any incidents occurring while executing dives to any schedule calculated by this software.

Pro Planner does not warn where bad diving practice may occur as a result of a planned sequence.

Always follow the basic rules:

1. Deepest dive first.
2. No 'yo-yo' dive profiles. Recent research indicates that these Exaggerated profiles may lead to type 2 DCI even when the diver is inside the no stop times on the tables.
3. Especially on high exposure dives, make no more than two dives a day, with a day off in a sequence of days diving.
4. Avoid Carbon Dioxide build-up caused by over-work and/or inadequate breathing equipment.
5. Avoid dehydration.

Pro Planner will display both CNS and Pulmonary toxicity numbers. The user is reminded that Oxygen toxicity varies from person to person and day to day. A divers tolerance to Oxygen is greatly reduced by exercise (CO<sub>2</sub> build up) and/or inadequate breathing equipment.

For more details on Oxygen limits the user is directed to either the NOAA or IANTD Nitrox manuals. Oxygen toxicity is a science in itself and the user must be fully conversant with the tolerance limits. This software cannot compensate in any way for over-stepping those limits; it will only calculate current values using established methods.

Full and complete training is essential for all diving. Further specialist training in nitrox, tri-mix, and rebreather techniques is imperative before attempting any dives with these specialist mixes.

## SPECIFICATIONS

<b>Algorithm:</b>	Buhlmann ZHL16
<b>Number of tissues:</b>	16
<b>Compartments:</b>	16
<b>N<sub>2</sub> half-times (mins):</b>	4.0, 8.0, 12.5, 18.5, 27.0, 38.3, 54.3, 77.0, 109.0, 146.0, 187.0, 239.0, 305.0, 390.0, 498.0, 635.0
<b>He half-times (mins):</b>	1.51, 3.02, 4.72, 6.99, 10.21, 14.48, 20.53, 29.11, 41.20, 55.19, 70.69, 90.34, 115.29, 147.42, 188.24, 240.03

**Altitude range:** Maximum= 1400mbar Minimum= 0 mbar.

Warning! Although the software can calculate to 0 mbar, the algorithm is only published to 3500m/11550ft above sea level. Any dives executed above 3500m/11550ft are at increased risk.

### Depth ranges:

Air	70m 220 ft.
Nitrox	70m 220 ft.
Tri mix	200m 640 ft.
Nitrox RB/Heliox RB.	300m 970 ft.

### Oxygen toxicity system:

CNS % exposure based on the published NOAA limits.  
Pulmonary REPEX (1bar PPO<sub>2</sub> \* 1 min = approx. 1 OTU).

**CNS timer reduction factor:** 1:2 below 0.5 bar PPO<sub>2</sub>.

**Depth safety factor:** (DEPTH x 1.03) + 1 metre

**Ascent rate** is fixed at 10m (33ft)/min. On decompression dives it is advisable to perform short deep-water safety stops to help prevent the generation of micro bubbles.

Under function 9, micro bubble safety can be programmed in and micro bubble stops will be prompted for. They are highlighted by a ^.

**Descent rates** and gas switches can be programmed by going to an intermediate depth for the time it takes to normally get there (i.e 40m for 2 mins = 20m/min descent). Otherwise descent rate is included in bottom time additional for safety.

**Suitable computers and printers:** IBM or compatible 8086 and above.  
Colour VGA screen or above preferable.  
9 pin dot matrix printers and HP compatible laser jet printers supported.

Please call support if you have a specific requirement.

## INSTRUCTIONS

Pro Planner (PP) is simple to operate and comes in four upgradeable versions:  
OPEN CIRCUIT AIR/NITROX, TRIMIX, NITROX RE-BREATHER and TRIMIX RE-BREATHER.

## INSTALLATION

PP can be run from a floppy/CD drive or be copied onto the hard drive of a PC.

For DOS users to install PP onto a PC simply type "INSTALL" with the disc in the floppy/CD drive. For windows users open the drive where the disc is inserted, double click the INSTALL file on the CD or floppy. PP will automatically create a directory called Prodiver (if you already have a directory called Prodiver you may wish to rename it). To run PP go to the directory and type PLAN.

Once installed, you will be asked to accept the liability waiver by entering your name and address on the front screen.

It is important you keep the master disc safe, as any upgrades can only be issued by returning this disc. Any attempts to copy this disc may result in corruption of the algorithm and version log. In doing so you may also lose your right to any free upgrades.

If there is a copy protection DONGLE issued with the software it must be connected to the parallel port before the software can be run.

## FRONT SCREEN

Having registered your copy you will be asked to select one of the options.



If an option is not accessible you may need to purchase another version (i.e. if you have bought the Air/nitrox version, Trimix is disabled).

## GENERAL NOTES ON ALL DIVE SCREENS

In options 1-5 there are now additional functions on the dive screens.

Once the Gas Tables option (see function 8) has been enabled, the software will automatically auto select your favourite gases dependant on depth. At any point in the plan you can use the up/down arrows to back edit. At the end of a plan you are prompted if you want to re-edit.

If you change one time/depth and then want to automatically complete the plan based on previously entered data, just type an A.

There is an additional help line at the base of the screen.

Each decompression stop can now be artificially extended to reduce the deco at subsequent stops or to complete the decompression in deeper water.

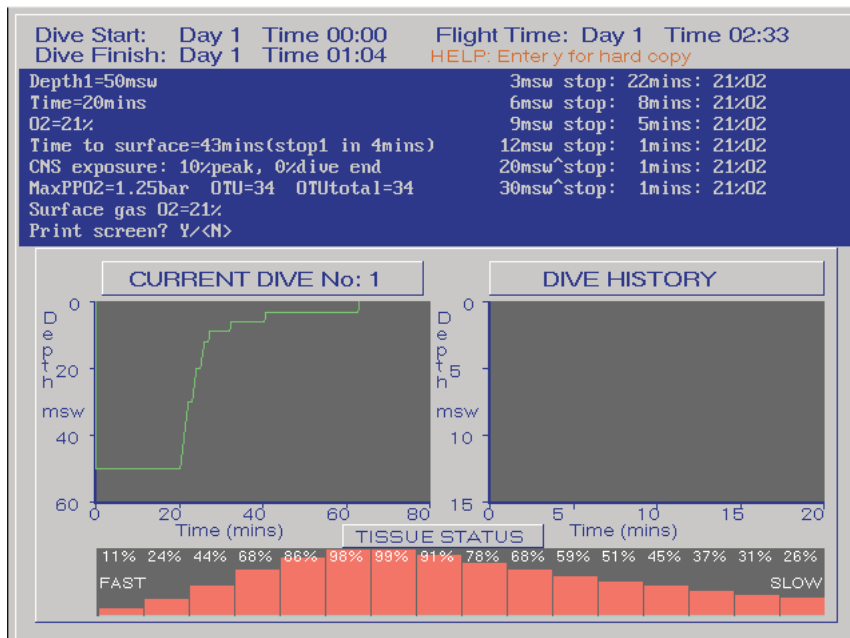
Options Include:

# 1. AIR

With the Air option, 79% N<sub>2</sub>/21% O<sub>2</sub> is automatically assumed as the breathing gas.

PPO<sub>2</sub> and OTU's are displayed, as is tissue load. This is updated at the end of each dive and at the end of surface interval. As with all options HELP is available in the top right of the planning screen.

To backspace through the dive to modify or correct mistakes, the "up arrow" button can be pressed.

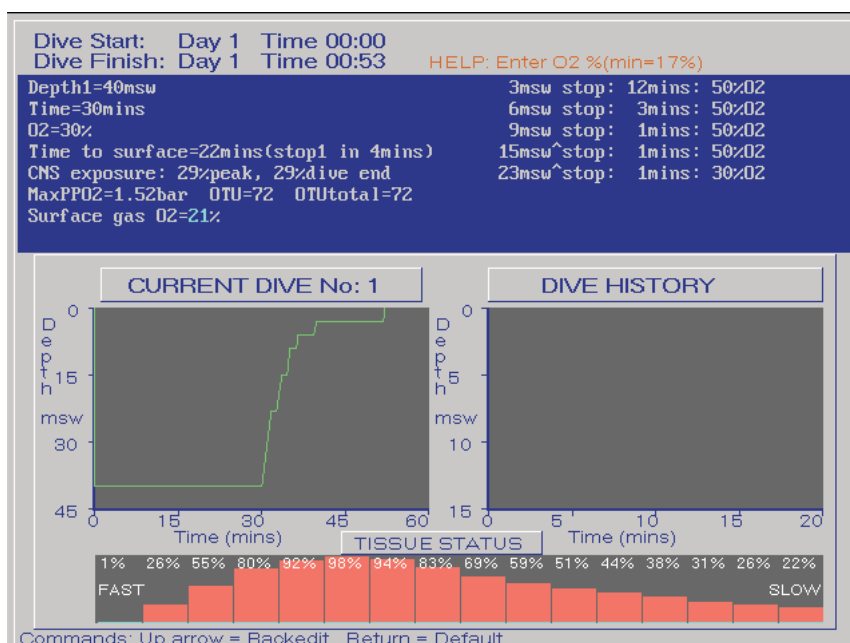


# 2. NITROX

Any combination of N<sub>2</sub> and O<sub>2</sub> can be used here, either during the dive, at stops or between dives at the surface. Maximum Oxygen content 100%.

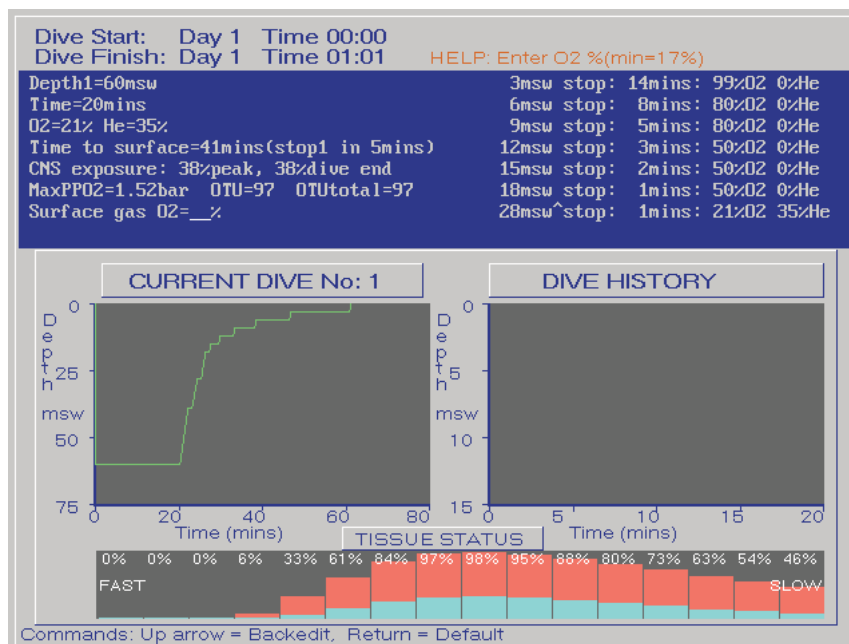
The gas used at each depth will be automatically prompted, based on the gas and depth data entered in the gas table list. See menu option O. The prompted gas can be modified. The gas details are saved if the dive is saved using menu option 7.

To backspace through the dive to modify or correct mistakes, the "up arrow" button can be pressed.



### 3. TRIMIX

Any combination of N<sub>2</sub>, He and O<sub>2</sub> can be used here, either during the dive, at stops or between dives at the surface. The gas used at each depth will be automatically prompted, based on the gas and depth data entered in the gas table list. See menu option O. The prompted gas can be modified. The gas details are saved if the dive is saved using menu option 7. To backspace through the dive to modify or correct mistakes, the "up arrow" button can be pressed.

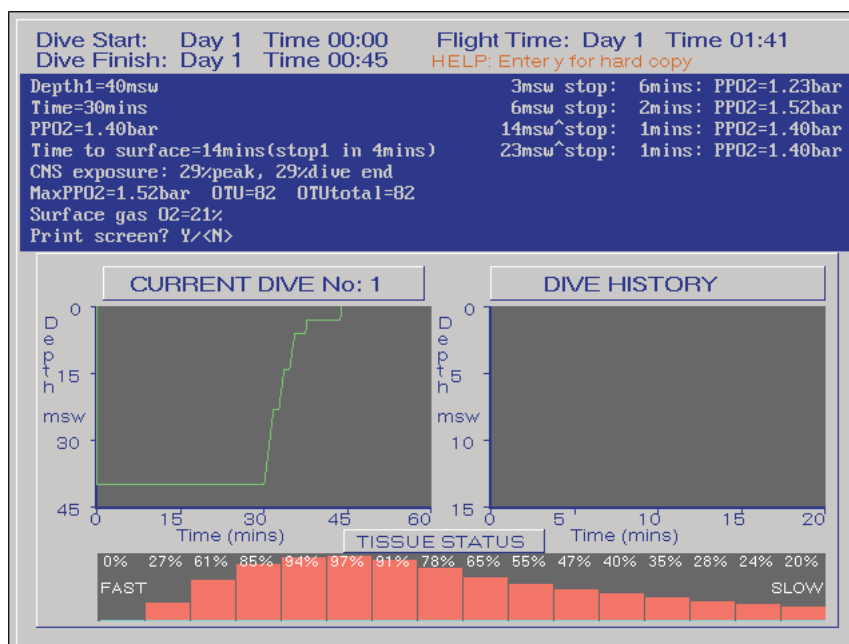


### 4. NITROX RE-BREATHER plus Bailout planning

This assumes a closed circuit Re breather and works by entering a PPO<sub>2</sub>. If no PPO<sub>2</sub> is entered, the system assumes 1.40 Bar. At depths less than the selected PPO<sub>2</sub>, the software will assume the maximum for that depth. The maximum PPO<sub>2</sub> that can be entered is 2.00 Bar.

To enter a bailout mode, enter 'b' or 'B' when prompted for PPO<sub>2</sub> during dive details entry. This will then prompt for bailout gas details. The default for the bailout gas is air.

Once bailout mode has been activated, the bailout gas will be prompted for instead of diluent. To return back to closed circuit, enter 'c' or 'C' when prompted for O<sub>2</sub> entry.



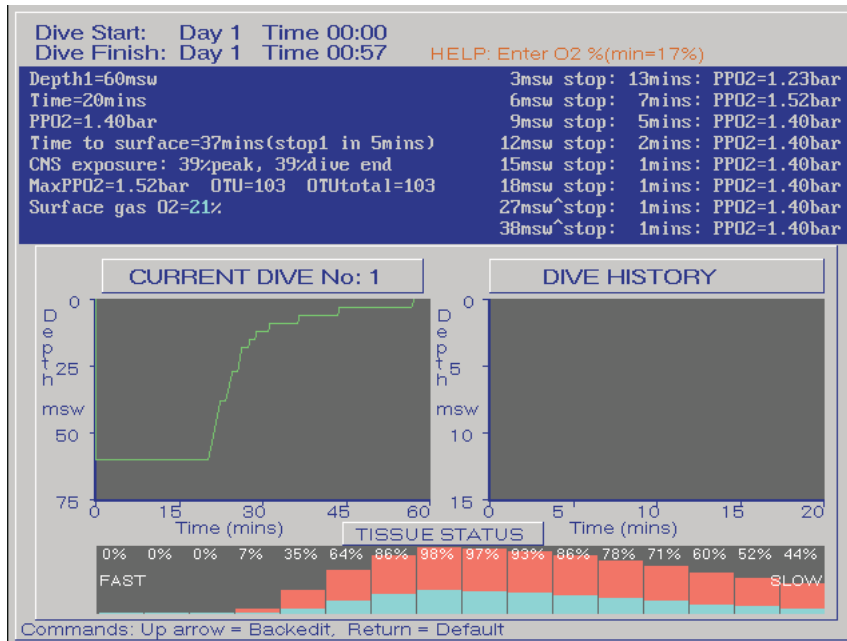
## 5. TRIMIX/HELIOX RE-BREATHER plus Bailout planning

This assumes a closed circuit Re breather and works by entering a PPO<sub>2</sub>. If no PPO<sub>2</sub> is entered the system assumes 1.40 Bar. At depths less than the selected PPO<sub>2</sub>, the software will assume the maximum for that depth. The maximum PPO<sub>2</sub> that can be entered is 2.00 Bar.

To enter a different diluent mix, enter He and O<sub>2</sub> percentages when prompted during dive details entry. The diluent O<sub>2</sub> default for the first depth is determined from the PPO<sub>2</sub> rebreather setpoint entered. Thereafter, the default is the last value entered, or the maximum achievable if the inert gas percentages have changed.

To enter a bailout mode, enter 'b' or 'B' when prompted for PPO<sub>2</sub> during dive details entry. This will then prompt for bailout gas details. The default for the bailout gas is the diluent.

Once bailout mode has been activated, the bailout gas will be prompted for instead of diluent. To return back to closed circuit, enter 'c' or 'C' when prompted for O<sub>2</sub> entry.



## 6. UNITS (Feet, Metres)

The currently displayed units are used on screen. To change select 6..

## 7. SAVE

To save a planned dive to disc, enter a name (a list of currently stored dives is shown).

## 8. RESTORE/REVIEW

This function allows several features to be accessed:

### 1. Mission Creating.

In order to add dives to a preplanned dive sequence the user simply recalls the planned dive using this option. Having then selected one of the planning options (1 to 5); you are asked if you wish to append this new dive to the sequence. \*\*\*Important\*\*\* If a planned mission is to include air, Nitrox and Trimix dives, then the Trimix option should be used throughout. When an air or Nitrox dive is planned, obviously the Helium content is left out. You cannot start the mission using the air option and then switch to Trimix part way. Up to 10 dives may be planned in a mission.

### 2. While reviewing the planned dive you may print the decompression schedule.

This can now also be exported to a word processor or spreadsheet for direct generation of dive tables. The file is stored in the Prodiver directory as a .TXT file.

### 3. While reviewing the dive, you may select to calculate total gas volume requirements.

Simply follow the prompts.

```
Mission UNTITLED 11/05/99 Dive 1
Atmospheric pressure= 1000mBar

Depth1= 60msw
Time= 20mins
21%O2 35%He
RT= 20mins

Total time to surface=41mins
Time to first stop=5mins
CNS dose: 38%peak, 38%dive end
MaxPP02=1.52bar OTU=97units
Dive Start: Day 1 Time 00:00
Dive Finish: Day 1 Time 01:01
Flight Time: Day 1 Time 04:13
Surface gas=21%O2, 0%He
Mission OTU total=97units
Safety factor= 0%

***** DIVE 1 DECOMPRESSION REQUIREMENTS *****
39msw^stop: 1mins: 21%O2 35%He Run Time= 23mins
28msw^stop: 1mins: 21%O2 35%He Run Time= 25mins
18msw stop: 1mins: 50%O2 0%He Run Time= 27mins
15msw stop: 2mins: 50%O2 0%He Run Time= 30mins
12msw stop: 3mins: 50%O2 0%He Run Time= 33mins
9msw stop: 5mins: 80%O2 0%He Run Time= 38mins
6msw stop: 8mins: 80%O2 0%He Run Time= 46mins
3msw stop: 14mins: 99%O2 0%He Run Time= 61mins

Do you require gas fill details? Y/<N
```

```
Mission UNTITLED 11/05/99 Dive 1
Atmospheric pressure= 1000mBar

Depth1= 60msw
Time= 20mins
21%O2 35%He
RT= 20mins

Total time to surface=42mins
Time to first stop=5mins
CNS dose: 35%peak, 35%dive end
MaxPP02=1.52bar OTU=93units
Dive Start: Day 1 Time 00:00
Dive Finish: Day 1 Time 01:02
Flight Time: Day 1 Time 04:22
Surface gas=21%O2, 0%He
Mission OTU total=93units
Safety factor= 0%

DIVE 1 GAS FILLING DETAILS Number of mixes= 5 Breathing rate=10.00ltr/min
Gas mix1: Reserve= 25% Cylinder= 24litres
21%O2 35%He Fill pressure= 88bar (Free gas volume at 1bar=2104.2litres)
Gas mix2: Reserve= 25% Cylinder= 24litres
21%O2 35%He Fill pressure= 4bar (Free gas volume at 1bar=106.4litres)
Gas mix3: Reserve= 25% Cylinder= 10litres
50%O2 0%He Fill pressure= 25bar (Free gas volume at 1bar=249.3litres)
Gas mix4: Reserve= 25% Cylinder= 10litres
80%O2 0%He Fill pressure= 31bar (Free gas volume at 1bar=311.9litres)
Gas mix5: Reserve= 0% Cylinder= 0litres
80%O2 0%He Fill pressure= 0bar (Free gas volume at 1bar=0.0litres)

***** Send to printer? Y/<N *****
```



## 9. SAFETY FACTOR

By typing in a safety factor, the total inert gas component in the mix is increased by 1% for every 5% entered. This safety percentage does not apply when at the surface, only when diving. You can also enter a micro bubble safety factor which will force deep-water bubble controlling stops.

## A. ATMOSPHERIC

**Warning!** Adjustment of atmospheric pressure will seriously affect your decompression schedule. See notes in the specification section for pressure ranges.

## B. BREATHING RATE

Enter your surface-breathing rate. This is used in the gas volume calculations.

## C. CYLINDER FILLING

For Nitrox and Trimix dives this function allows you to enter the fill pressure of a cylinder, the % of each gas and use partial pressure mathematics to calculate the fill pressures of each gas (Air is assumed rather than pure Nitrogen).

Another function allows you to enter an equivalent Narcosis depth, PPO<sub>2</sub> target and dive depth. Gas percentages will then be calculated. These percentages can then be modified to create a "Standard gas", and the new PPO<sub>2</sub> details will be shown.

If a cylinder with an existing gas in it is to be the starting base for the new gas mix, then these details can be entered. The resulting additional gas to be added is then displayed.

The gas mix file can also be stored and exported to a word processor or spreadsheet.

```
CYLINDER FILLING
CALCULATIONS                                HELP: Help line

Fill pressure= 232bar
Working depth= 60msu
Working PPO2= 1.47bar
Personal air narcosis depth= 29msu
Helium = Y

21.0%O2, 35.0%He, 44.0%N2
Mix narcosis depth= 60msuw
CURRENT Fill pressure= 0bar
Current O2 = 0%
Current He = 0%

Helium fill=81.2bar
Air fill=129.2bar
Oxygen fill=21.6bar

Re-Edit? Y/<N>
```

## S. LAST STOP

This allows the final stop in a decompression sequence to be performed at 6m/20ft, 4.5m/15ft, or 3m/10ft. Some recent research has shown that the 3m/10ft is the least safest stop to perform, and a safety advantage would be gained by doing an extended 6m/20ft stop or 4.5/15m stop instead. Enter S to toggle between the choices.

If the 4.5/15ft stop is used, then an asterix (\*) is shown against the stop.

## T. TIME OF DAY

If no start time is entered the system assumes 00:00 hours on day 1 as the mission start time. Time of day can be entered in order to calculate mission end times.

The software runs three time line systems.

1. Bottom time and Time at Stops - Descent is assumed to be included in bottom time and time at each individual stop is shown. Time to surface reflects ascent rates.
2. Run Time - This is time from leaving surface to the end of each depth change.
3. Decompression Time - Time from leaving bottom to end of each stop.

## P. PRINTER TYPE & FORMAT

Pro-Planner can print to a dot matrix or Laser jet printer. On the Laser jet, the format can be Portrait or Landscape. Press P to toggle to the printer and format of your choice.

## O. GAS TABLES / OPTIMIZE

Gas Optimize allows the PPO<sub>2</sub> of the open circuit mix to be kept within a range. An upper and lower limit of PPO<sub>2</sub> is selected. Then during the dive, the default return value for the O<sub>2</sub> % will be forced to be within the PPO<sub>2</sub> limits. If the last O<sub>2</sub> % is within the range then this will be the default. If not, then a new O<sub>2</sub> % is calculated so as to give the upper limit PPO<sub>2</sub>. If the upper and lower limit are the same, then the default O<sub>2</sub> % for each depth will effectively give a fixed PPO<sub>2</sub> for the dive.

Under Gas Tables you can enter a list of your favourite gases with their MOD's. This list can be used by PP when in auto planning mode or be uploaded to the VR3 Mixed Gas computer.

This item also allows you to put in 10 favourite gas (see functions 1-5 general notes). If you do not want to programme all 10 then just put a 0 in the depth window. The plan screen automatically selects the gases as their depth range is reached during the plan.

## M. MANUAL

This manual is displayed on the screen, and can be printed out if required. On Floppy drive copies of the software, the manual is held in a read-only text file called MANUAL.TXT, and can also be viewed by from the DOS prompt by using: TYPE MANUAL.TXT | MORE . On CD-ROM versions of the software, this graphical manual is saved in PDF Format and can be viewed using Acrobat® Reader. The Reader installation file can be found in the sub-folder "Acrobat" on the CD.

There are two versions of this manual in PDF Format, one called ppm-eu.pdf and one called ppm-usa.pdf. Both manuals are identical, except the USA version is formatted for "Letter" paper size; the EU version is formatted for A4 paper size. From the Reader program, full-colour printouts of the manual can be obtained via the normal Windows® File/Print routines.

## D. LINK TO PROLOG

A link to *Prolog* the VR3 logging software.

## U. BUBBLES

Toggles the moving bubbles ON and OFF the screen.

## 0. EXIT

Quits the program and returns to the operating system.

# PROLOG - VR3 MIXED GAS COMPUTER LOGGING SOFTWARE

## INTRODUCTION

Prolog is designed to work with Proplanner and the VR3 Mixed Gas dive computer. Using VR3 allows you to download VR3 dive data and upload gas lists prior to diving the unit.



## 1. DOWNLOAD DIVE

Simply follow the prompts and dive data will be transferred from VR3. This can then be saved and viewed.

## 6. METERS

Selects metric or imperial use.

## 7. SAVE

Save a dive to a named file.

## 8. RESTORE/REVIEW

Review any saved dive.

## G. GAS TABLE

Allows you to edit a list of gases for uploading to VR3.

## D. PROPLANNER

Switches back to Proplanner

## P. PRINTERS

Select a printer. Note: Due to limited printer support, some graphics may not be printable.

## C. COM PORT

Select the COM port where the Infra Red link is active.

# Oxy-Tech Oxygen Analyser

A diver in a yellow helmet and mask is shown underwater, using a yellow oxygen analyser. The diver is wearing a dark wetsuit with a 'DRAGON' logo on the chest. The background is dark with greenish light and bubbles rising from the diver's breathing apparatus.

- > Affordable, high accuracy oxygen analyser
- > Measures 1-100% oxygen
- > Interfaces to any digital volt meter with a 200mv scale
- > Optional volt meter available
- > Cylinder and LP hose adapters standard
- > Water resistant